

PEOPLE



Green Eyes

(P68)



Blue Eyes

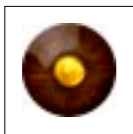


Light Brown
Eyes

(P68)



Hazel Eyes



Brown Eyes

(P68)



Dark Brown or
Any Color Eyes



Blond Hair

(P68)

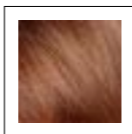


Red Hair

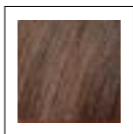


Black Hair

(P68)

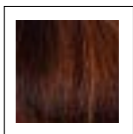


Light Brown
Hair



Brown Hair

(P68)



Dark Brown
Hair



White or Grey
Hair



White or Pale
Skin

(P69)



Very Light Brown
Skin

(P69)



Light Brown
Skin



Brown Skin

(P69)



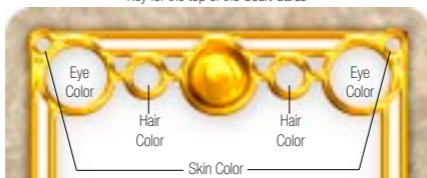
Dark Brown
Skin

Page Numbers in
green (P00)

The Quest Tarot is published by
Llewellyn Worldwide Publishing.
www.Llewellyn.com

Order the book and
deck or accessories
from:
www.questtarot.com

Key for the top of the Court Cards



The **eye color symbol** is shown in the right and left large circles. There is a gold ball in the center which is there to simply add ornamentation.

The **medium size circles**, to the right and left of the eye color symbols, contain **hair color**. You can actually see the strands of hair in these various samples.

The **small circles** at the very top left and right of the card are for **skin color**. The range of colors go from white to dark brown.

Reading the **gender** of the person is fairly easy. It has been my experience that the gender on the card is usually the gender of the person shown on the card. However, once in a while you will find that the gender will be wrong but the influence of the gender type shown on the card is still present.

Confused? Here's how that would work. I did a reading where the seeker was asking about the person they were dating. The card that came up was the Daughter of Cups. I was confused and asked if she was dating a man or a woman. She answered that she was dating a man. Well as you can see the card shows a woman but she was dating a man. I told her that once in a while the card will not show gender but rather what the person is really like. I said to her that the man she was dating must be rather feminine and enjoy exploring his softer side. She smiled and agreed. She said that one of the reasons she loved him was that he wasn't afraid to show his feminine side and he had a lot of interest in what would stereotypically be considered feminine.

So, be aware, that the Court Cards may not always show genders but rather the energy of the person in question.

Included here also is the key for **hair color** in the cards. What appears here are square samples of the different colors, though they appear in the medium circles next to the eye color symbols. You can also see the Court Card Key that shows the placement of the different indicators.

The next key is **skin color**. Now I know that there is every shade of skin color on the earth and that this key only shows the major ones. Sometimes when I read the skin color of a person I squint my eyes just a little to let my mind fill in the actual color I am seeing along with the represented color on the card. You are not limited to the colors represented by the key. As you feel more comfortable reading skin color you will find that you will also be able to intuit tattoos or birthmarks. Just relax and let your unconscious mind have a chance to assist your reading.

Determining Ages in the Court Cards

If you need to determine the age of the individual simply rate the cards as Father being much older, Mother being older, Son being around the same age and Daughter being younger than the seeker. This is a different order than shown for the Court Cards in this deck but I find this order works very well with age.

Don't worry about memorizing the physical types. Why would you want to make readings go from a psychic experience to a mechanical experience? When I do readings I want to stay with the cards and let my higher self drift upward to a higher vibration. The cards are there to help keep you grounded and give you the visual language you need to convey the messages you are receiving to the seeker.